

PROVINCIA DI VERONA

COMUNE DI SOMMACAMPAGNA

PIANO PARTICOLAREGGIATO NUCLEO RURALE E4 “VALBUSA”

TAV. 2 - Documentazione cartografica

data: 21 aprile 1997

Il Sindaco

Il Segretario

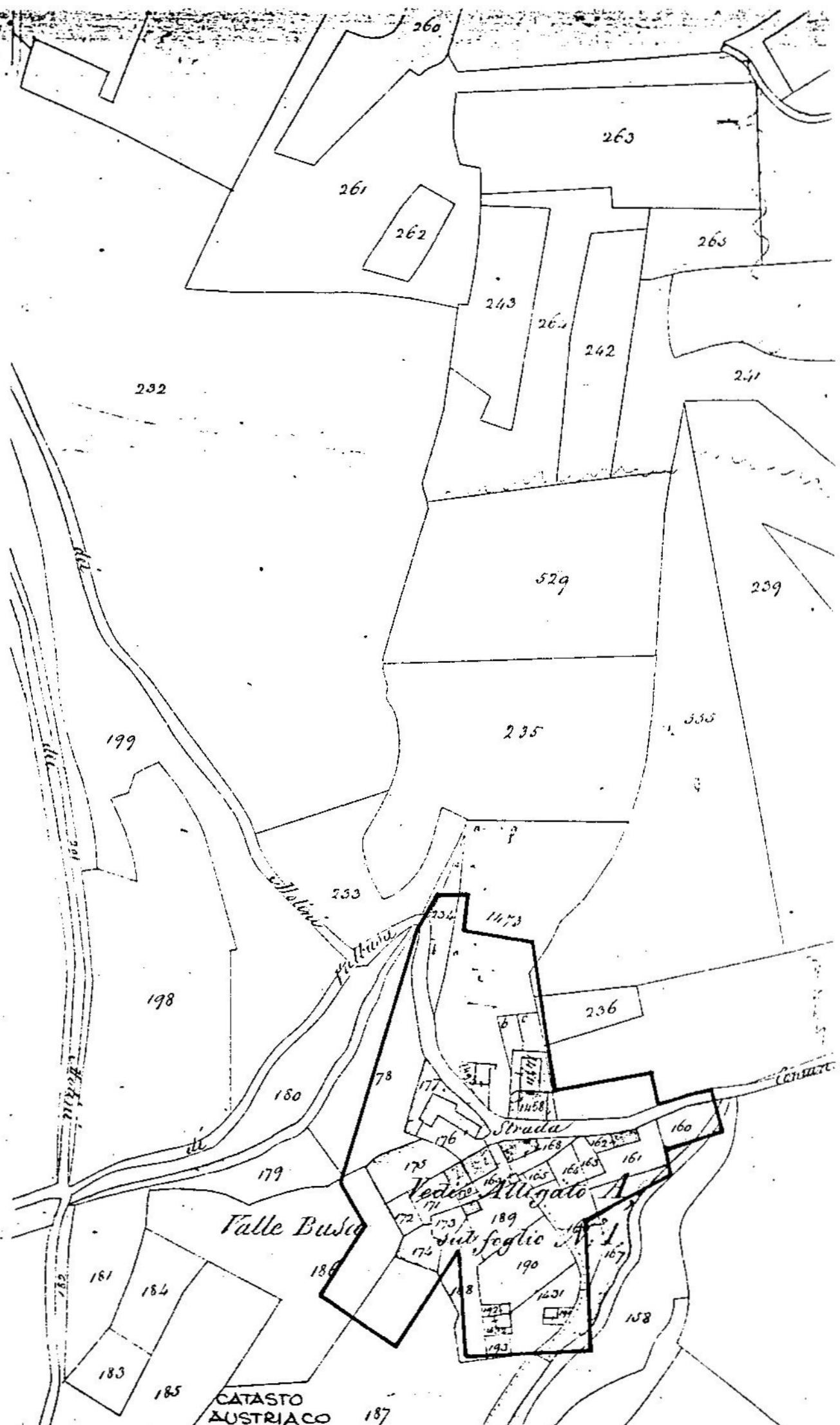
Il Progettista

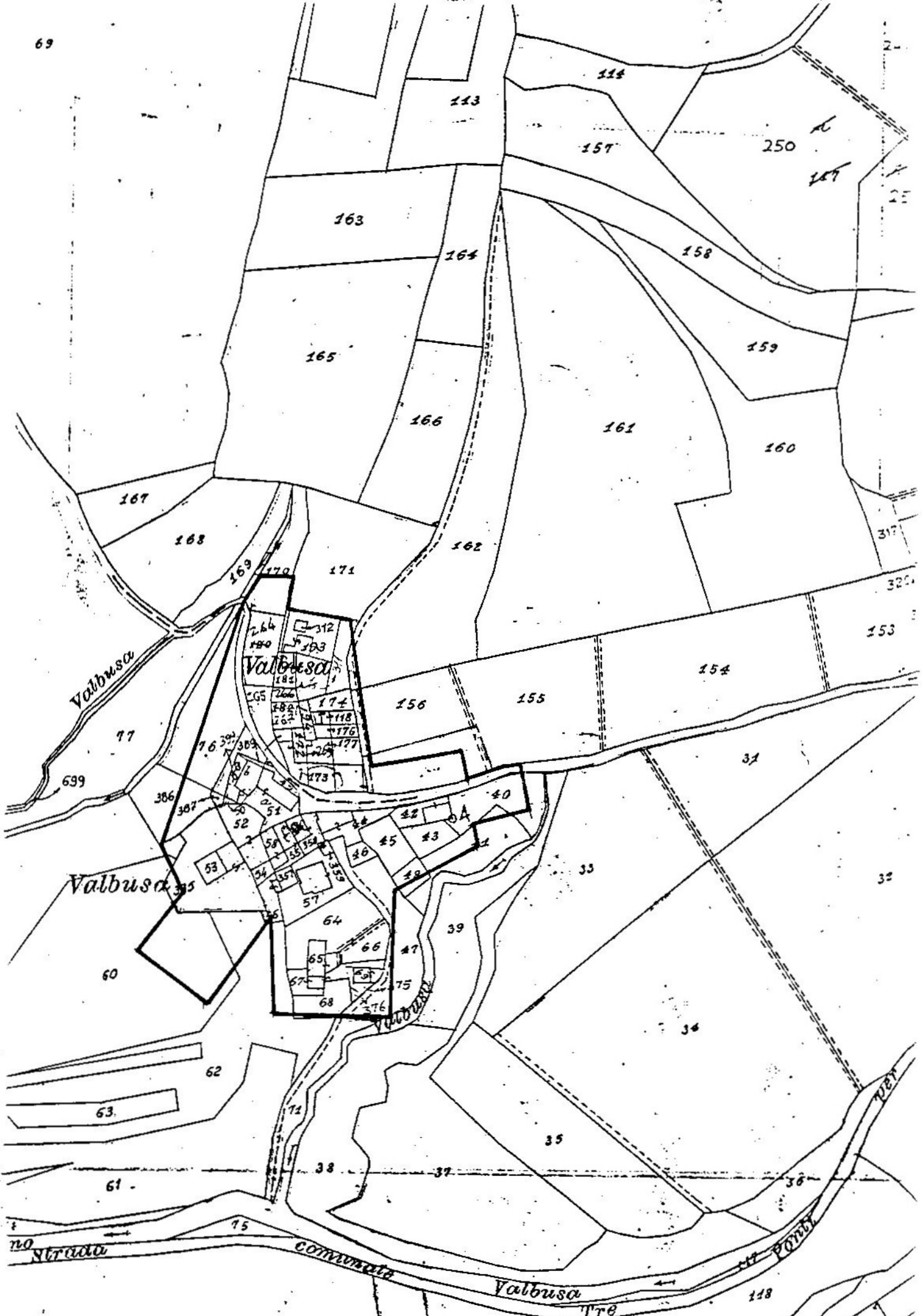


arch. Carlo Battistella

Via degli Archi 20/a - 37020 S.Pietro in Cariano - tel. e fax 045/7725301

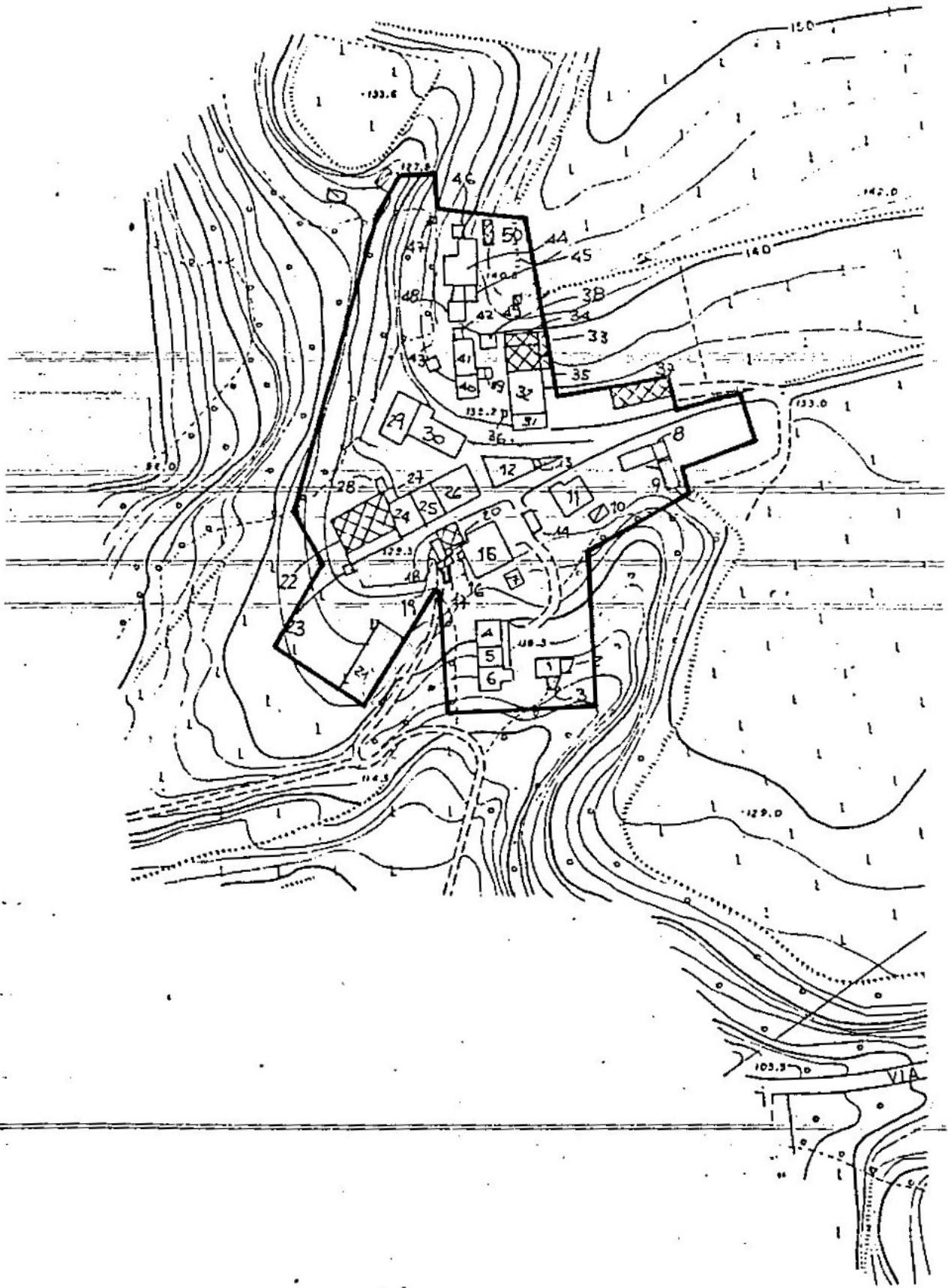
10
Stora



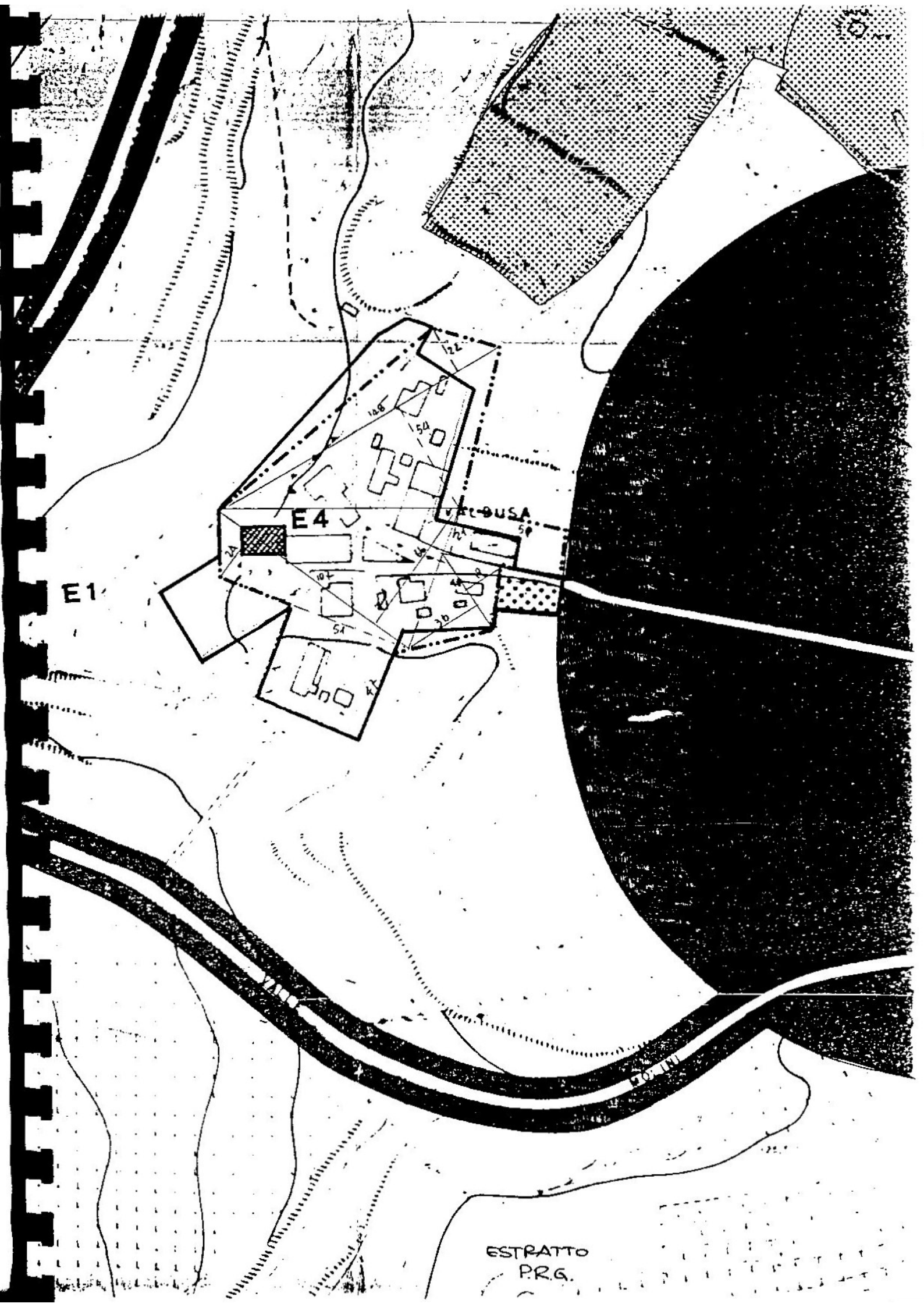


CATASTO ATTUALE

E 116 4000
N 5 076 400



AEROFOTOGRAMMETRIA



E1

E4

USA

ESTRATTO
P.R.G.